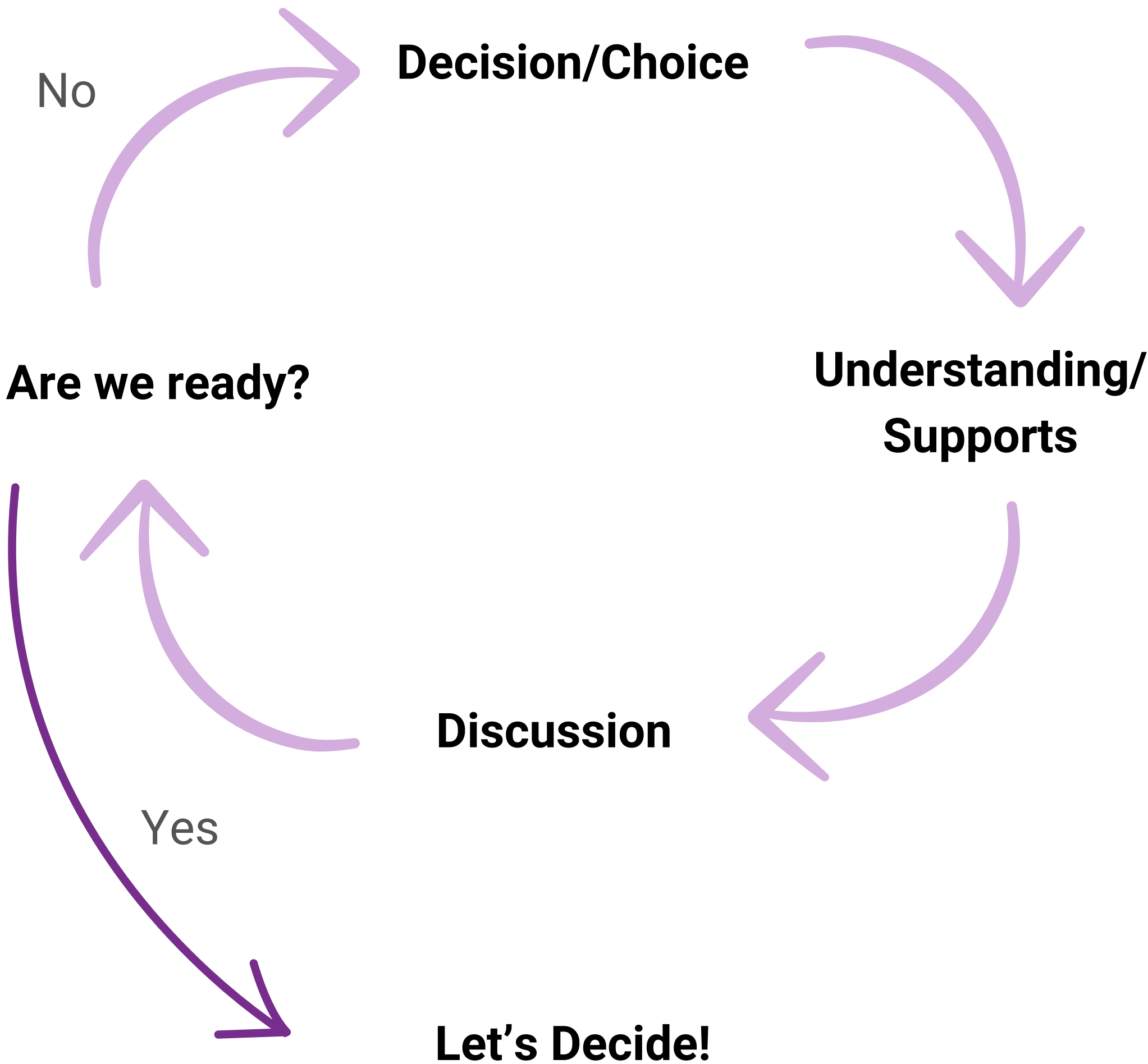


Making



Types of Support

These are some kinds of extra supports we might use in decision making

Easy Read

Can we find or create information is Easy Read?



Explain it again

I need to go over it again



Mentorship

Can we find someone who has done this before to help?



Example

Can we find an example of where this has worked before?



Video

Is there a video that explains this?



More time

I need more time to think about it?

